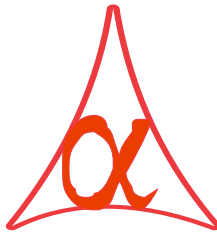




**POWER OF SIMPLICITY**

**Automatic Multiple Payment**

**Vouchers Creations - 1.0**



**Alpha Automation Pvt. Ltd.**

**Head Office**

336-Madhva Plaza, Opp. SBI Bank,

Nr. Lal Bungalow, JAMNAGAR –Gujarat (India)

Phone No. : +91-288-2660530/31, +91-9099908115, 9825098442

Email : tdl@aaplautomation.com

**Branch Office**

Rajkot : 807-Dhanrajni Complex, Nr. Hotel Imperial Palace, Dr. Yagnik Road, RAJKOT (Gujarat).

Gandhidham : 92-GMA Building, 2nd Floor, Plot No. -297, Sector-12B. GANDHIDHAM (Gujarat)

© 2012 Alpha Automation Pvt. Ltd.. All rights reserved.

Tally, Tally 9, Tally9, Tally.ERP, Tally.ERP 9, Shoper, Shoper 9, Shoper POS, Shoper HO, Shoper 9 POS, Shoper 9 HO, Tally Developer, Tally. Developer 9, Tally.NET, Tally Development Environment, Tally Extender, Tally Integrator, Tally Integrated Network, Tally Service Partner, Tally Academy & Power of Simplicity are either registered trademarks or trademarks of Tally Solutions Pvt. Ltd. in India and/or other countries. All other trademarks are properties of their respective owners.

Version: Alpha Automation Pvt. Ltd. / Automatic Multiple Payment Vouchers Creations / 1.0/ Aug-2016.

## Automatic Multiple Payment

### Vouchers Creations -1.0

Introduction:

This add-on helps users to create multiple payment Vouchers with one configuration. Selection of Cash/Bank and other details differently for every transaction, and he can make multiple payments from single screen.

#### **Benefits**

- Easy and quick creation of voucher.
- Easy maintenance of bulk payment vouchers.

#### **Important!**

As a best practice it is advisable to back up your company data

#### **Installation**

1. Copy the TCP file in Tally.ERP9 Folder.
2. Gateway of Tally → F12→ Product & Features → F4 (Manage Local TDL) → Select Yes in Load TDL on Start up and give the file name of TCP File. After pressing the Enter Key will show TDL Status which should be Active.

#### **System requirements:**

No additional hardware / software infrastructure is required for executing and operation this applications module

## Setup Guide

For Tally.ERP 9 Series A Release 3.1 and below

Go to **Gateway of Tally > F11: Features > Accounting Features**

Set "Yes" to the options "Enable Automatic Multiple Payment Vouchers Creation ? "

Company: <b>Abc Company Ltd</b>			
<b>Accounting Features</b>			
<b>General</b>		<b>Invoicing</b>	
Integrate Accounts and Inventory	? <b>Yes</b>	Allow Invoicing	? <b>Yes</b>
Income/Expense Statement instead of P & L	? <b>No</b>	Enter Purchases in Invoice Format	? <b>Yes</b>
Allow Multi-Currency	? <b>Yes</b>	Use Debit/Credit Notes	? <b>Yes</b>
<b>Outstandings Management</b>		Use Invoice mode for Credit Notes	? <b>Yes</b>
Maintain Bill-wise Details (for Non-Trading A/cs also)	? <b>Yes</b>	Use Invoice mode for Debit Notes	? <b>Yes</b>
Activate Interest Calculation (use advanced parameters)	? <b>Yes</b>	<b>Budgets &amp; Scenario Management</b>	
<b>Cost/Profit Centres Management</b>		Maintain Budgets and Controls	? <b>Yes</b>
Maintain Payroll	? <b>Yes</b>	Use Reversing Journals & Optional Vouchers	? <b>Yes</b>
Maintain Cost Centres	? <b>Yes</b>	<b>Other Features</b>	
Use Cost Centre for Job Costing	? <b>No</b>	Enable Cheque Printing	? <b>Yes</b>
More than ONE Payroll / Cost Category	? <b>Yes</b>	Set/Alter Cheque Printing Configuration	? <b>No</b>
Use Pre-defined Cost Centre Allocations during Entry	? <b>No</b>	Allow Zero valued entries	? <b>Yes</b>
Show Opening Balance for Revenue Items in Reports	? <b>No</b>	Maintain Multiple Mailing Details for Company & Ledgers	? <b>Yes</b>
		Set/Alter Company Mailing Details	? <b>No</b>
		Enable Company Logo	? <b>No</b>
		Enable Automatic Multiple Payment Vouchers Creation	? <b>Yes</b>

<b>Accept ?</b>
<b>Yes or No</b>

F1: Accounts      F2: Inventory      F3: Statutory

For Tally.ERP 9 Series A Release 3.2 and above

Go to **Gateway of Tally > F11: Features > Add-on Features**

Set "Yes" to the options "Enable Automatic Multiple Payment Vouchers Creation ? "

Company: **Demo Company**

**Add-On Features**

Enable Automatic Multiple Payment Vouchers Creation ? **Yes**

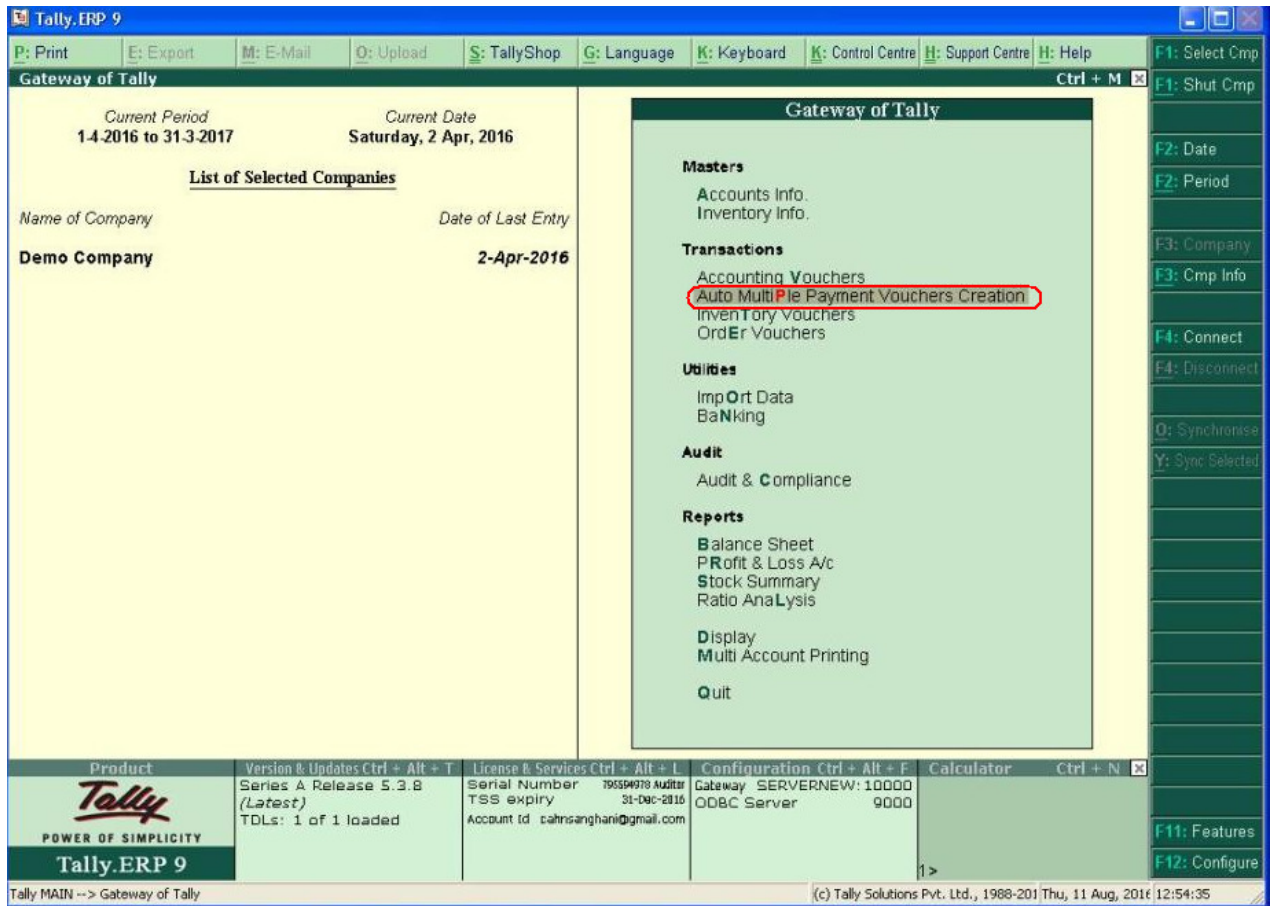
*Click on Shop button to buy Add-Ons*

**F1: Accounts**   **F2: Inventory**   **F3: Statutory**   **F4: TSS**   **F5: Audit**

**Accept ?**  
**Yes or No**

**Detailed User Guide:**

1. Navigate through Gateway of Tally → Auto Multiple Payment Vouchers Creations as shown below.



## 2. Select Cash / Bank Payment Ledger.

The screenshot shows the Tally.ERP 9 interface for 'Automatic Multiple Payment Vouchers Creation'. The window title is 'Automatic Multiple Payment Vouchers Creation' with a 'Ctrl + M' icon. The current period is '1-4-2016 to 31-3-2017' and the current date is 'Saturday, 2 Apr, 2016'. The 'Name of Company' is 'Demo Comp'. The 'Ledger Name' is set to 'ICICI Bank'. A table with the following structure is displayed:

Sr.No.	Date	Ledger Name	Narration
1			

A 'List of Ledger Accounts' dropdown menu is open on the right, showing the following options: Cash, HDFC Bank, ICICI Bank (highlighted), and SBI. The 'Quit' button is visible at the bottom right of the window. The status bar at the bottom shows 'Tally MAIN --> Gateway of Tally --> Automatic Multiple Payment Vouchers Creation' and '(c) Tally Solutions Pvt. Ltd., 1988-2011 Thu, 11 Aug, 2016 12:58:23'.

3. Enter Payment Detail Entry as below.

The screenshot shows the Tally ERP 9 interface. The main window is titled "Automatic Multiple Payment Vouchers Creation". It displays the following information:

- Current Period:** 1-4-2016 to 31-3-2017
- Current Date:** Saturday, 2 Apr, 2016
- Gateway of Tally:** Cash / Bank Ledger : ICICI Bank

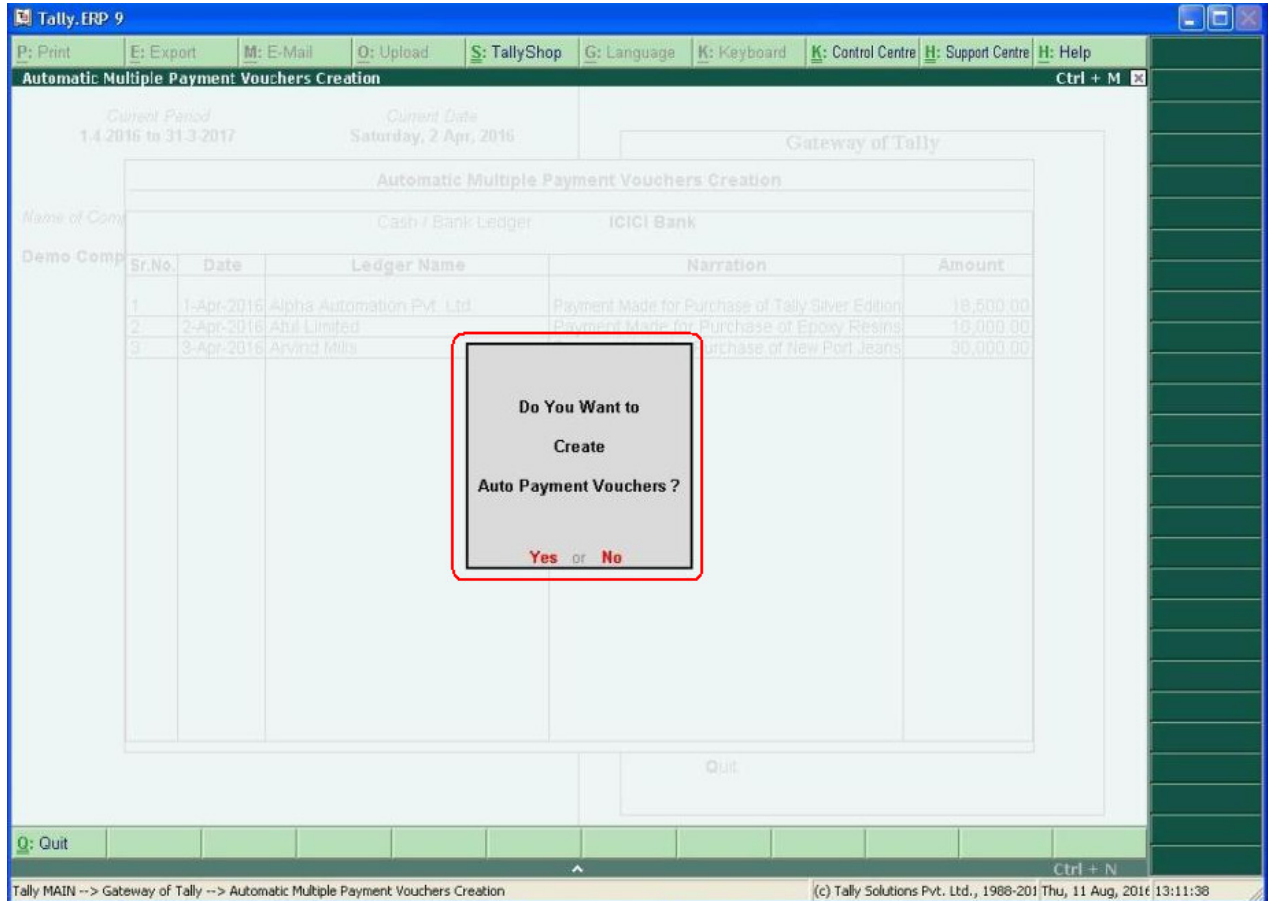
Sr.No.	Date	Ledger Name	Narration	Amount
1	1-Apr-2016	Alpha Automation Pvt. Ltd.	Payment Made for Purchase of Tally Silver Edition	18,500.00
2	2-Apr-2016	Atul Limited	Payment Made for Purchase of Epoxy Resins	10,000.00
3	3-Apr-2016	Arvind Mills	Payment Made for Purchase of New Part Jeans	30,000.00

A dialog box in the bottom right corner asks "Accept?" with "Yes" or "No" options.

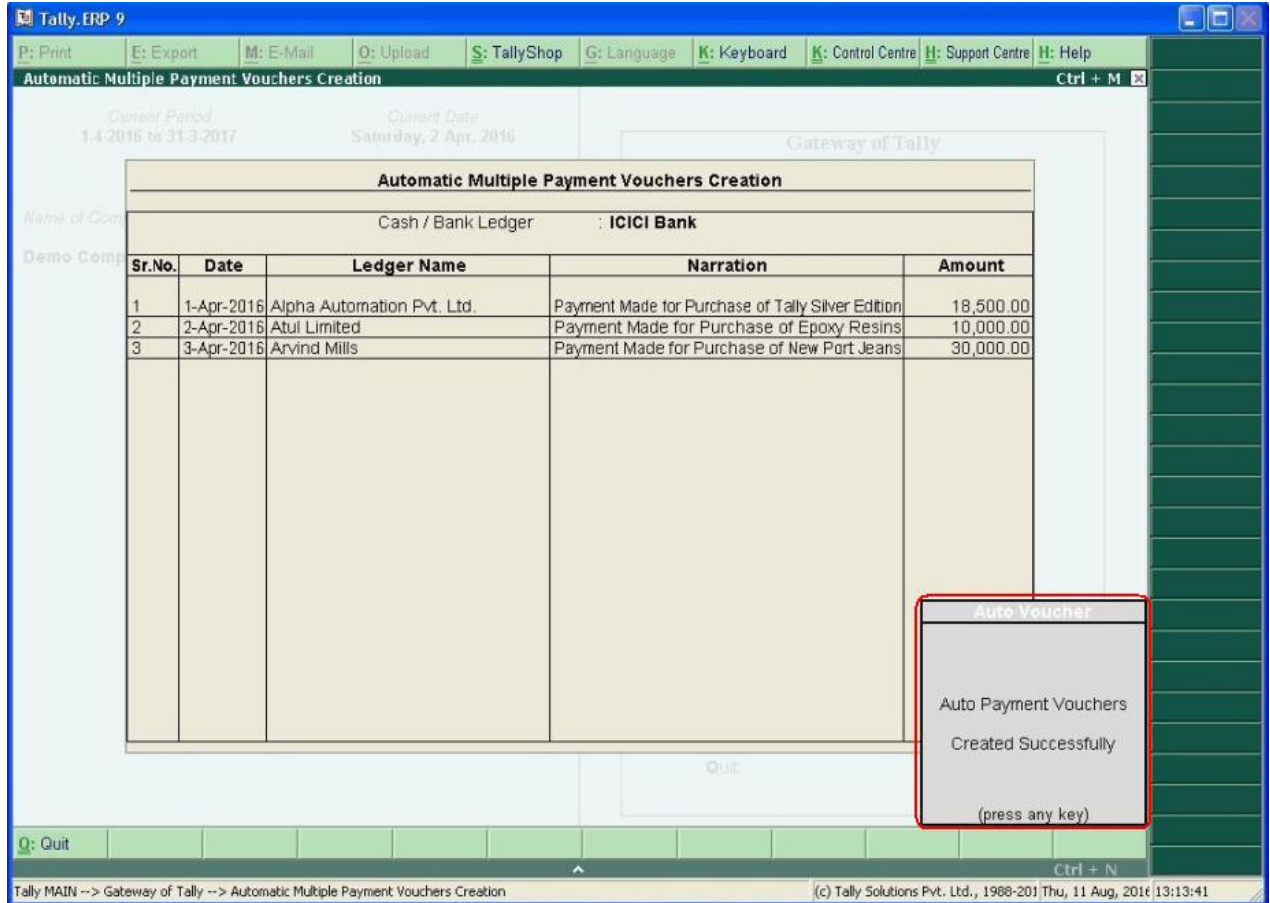
The status bar at the bottom shows: Tally MAIN --> Gateway of Tally --> Automatic Multiple Payment Vouchers Creation (c) Tally Solutions Pvt. Ltd., 1988-201 Thu, 11 Aug, 2016 13:04:24



4. Select “Yes” to Option “Do You Want to Create Auto Payment Vouchers ?”



5. Message “Auto Payment Vouchers Created Successfully!!” will appear on Screen.



# FAQ

## **Which version/releases of Tally.ERP 9 does the add-on support?**

This add-on will work only with Tally ERP 9 Series A, release 3.0 onwards.

## **How will I get support for this add-on?**

For any functional support requirements please do write to us on [tddl@aplautomation.com](mailto:tddl@aplautomation.com) or call us at +91-288-2660530/31 or +91-9099908115/ 9825098442.

## **If I need some enhancement / changes to be incorporated for the add-on, whom should I contact?**

Please to write to us on [tddl@aplautomation.com](mailto:tddl@aplautomation.com) with your additional requirements and we will revert to you in 24 hours.

## **Will new features added be available to us?**

We offer one year availability of all support and new features free of cost. After one year, nominal subscription cost will be applicable to you to continue to get free support and updates.

## **What will happen after one year?**

There is no fixed annual charge to be payable mandatory. However if any changes are required in our Add-On to make compatible with New Release of Tally.ERP9 then the modification Charges will be applied.

## **I am using a multi site. Can I use the same Add-on for all the sites?**

No, one Add-on will work only for 1 site. You need to purchase again if you want to use the same Add-on for more sites.

## **I have upgraded to a new Tally.ERP 9 Release. What will happen?**

Normally, the add-on will work fine without any glitches. If you face problems with the Add-on, you can contact us for support.

**Product and Features Page shows errors with the Add-on, What do I do?**

Check first if the error is because of the Add-on or because of clashes between 2 TDLs (An add-on is also a TDL). In case of clashes, disable one or more TDLs and check which TDL has error. If the Add-on has a problem, you can report it to us.

**My Tally went into educational mode after installing the add-on. What do I do?**

Go into **Gateway of Tally** → **Press F12** → **Select Product and Features** -> **Press F4** and remove the Add-on from the list and Restart Tally.