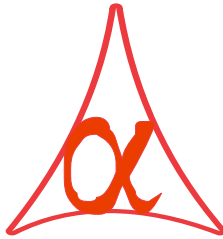




POWER OF SIMPLICITY

Voucher Type wise

Auto Godown Selection - 1.0



Alpha Automation Pvt. Ltd.

Head Office

336-Madhva Plaza, Opp. SBI Bank,

Nr. Lal Bungalow, JAMNAGAR –Gujarat (India)

Phone No. : +91-288-2660530/31, +91-9099908115, 9825098442

Email : tdl@aaplautomation.com

Branch Office

Rajkot : 807-Dhanrajni Complex, Nr. Hotel Imperial Palace, Dr. Yagnik Road, RAJKOT (Gujarat).

Gandhidham : 92-GMA Building, 2nd Floor, Plot No. -297, Sector-12B. GANDHIDHAM (Gujarat)

© 2012 Alpha Automation Pvt. Ltd.. All rights reserved.

Tally, Tally 9, Tally9, Tally.ERP, Tally.ERP 9, Shoper, Shoper 9, Shoper POS, Shoper HO, Shoper 9 POS, Shoper 9 HO, Tally Developer, Tally. Developer 9, Tally.NET, Tally Development Environment, Tally Extender, Tally Integrator, Tally Integrated Network, Tally Service Partner, Tally Academy & Power of Simplicity are either registered trademarks or trademarks of Tally Solutions Pvt. Ltd. in India and/or other countries. All other trademarks are properties of their respective owners.

Version: Alpha Automation Pvt. Ltd. / Voucher Type wise Auto Godown Selection / 1.0/
Nov-2016.

Voucher Type wise

Auto Godown Selection - 1.0

Introduction:

If you maintain transactions (Purchase/Sales etc) specific to a single godown, then this module is helpful to you. You can assign default godown in Voucher Type configuration screen. While doing entry, the godown will be automatically selected from the Voucher Type master. You have the choice to change the godown to some another godown in voucher also.

Important!

As a best practice it is advisable to back up your company data

Installation

1. Copy the TCP file in Tally.ERP9 Folder.
2. Gateway of Tally → F12→ Product & Features → F4 (Manage Local TDL) → Select Yes in Load TDL on Start up and give the file name of TCP File. After pressing the Enter Key will show TDL Status which should be Active.

System requirements:

No additional hardware / software infrastructure is required for executing and operation this applications module

Setup Guide

For Tally.ERP 9 Series A Release 3.1 and below

Go to **Gateway of Tally > F11: Features > Accounting Features**

Set "Yes" to the Options "Enable Voucher Type wise Auto Godown Selection ?"

Company: <u>Abc Company Ltd</u>			
<u>Accounting Features</u>			
<u>General</u>		<u>Invoicing</u>	
Integrate Accounts and Inventory	? Yes	Allow Invoicing	? Yes
Income/Expense Statement instead of P & L	? No	Enter Purchases in Invoice Format	? Yes
Allow Multi-Currency	? Yes	Use Debit/Credit Notes	? Yes
		Use Invoice mode for Credit Notes	? Yes
		Use Invoice mode for Debit Notes	? Yes
<u>Outstandings Management</u>		<u>Budgets & Scenario Management</u>	
Maintain Bill-wise Details	? Yes	Maintain Budgets and Controls	? Yes
(for Non-Trading A/cs also)	? Yes	Use Reversing Journals & Optional Vouchers	? Yes
Activate Interest Calculation	? Yes		
(use advanced parameters)	? Yes		
<u>Cost/Profit Centres Management</u>		<u>Other Features</u>	
Maintain Payroll	? Yes	Enable Cheque Printing	? Yes
Maintain Cost Centres	? Yes	Set/Alter Cheque Printing Configuration	? No
Use Cost Centre for Job Costing	? No	Allow Zero valued entries	? Yes
More than ONE Payroll / Cost Category	? Yes	Maintain Multiple Mailing Details for Company & Ledgers	? Yes
Use Pre-defined Cost Centre Allocations during Entry	? No	Set/Alter Company Mailing Details	? No
Show Opening Balance for Revenue Items in Reports	? No	Enable Company Logo	? No
		Enable Voucher Type wise Auto Godown Selection	? Yes

Accept ?
Yes or No

F1: Accounts F2: Inventory F3: Statutory F4: Tally.NET F5: Audit

For Tally.ERP 9 Series A Release 3.2 and above

Go to **Gateway of Tally > F11: Features > Add-on Features**

Set "Yes" to the Options "Enable Voucher Type wise Auto Godown Selection ?"

Company: **Abc Company Ltd**

Add-On Features

Enable Voucher Type wise Auto Godown Selection ? **Yes**

Click on Shop button to buy Add-Ons

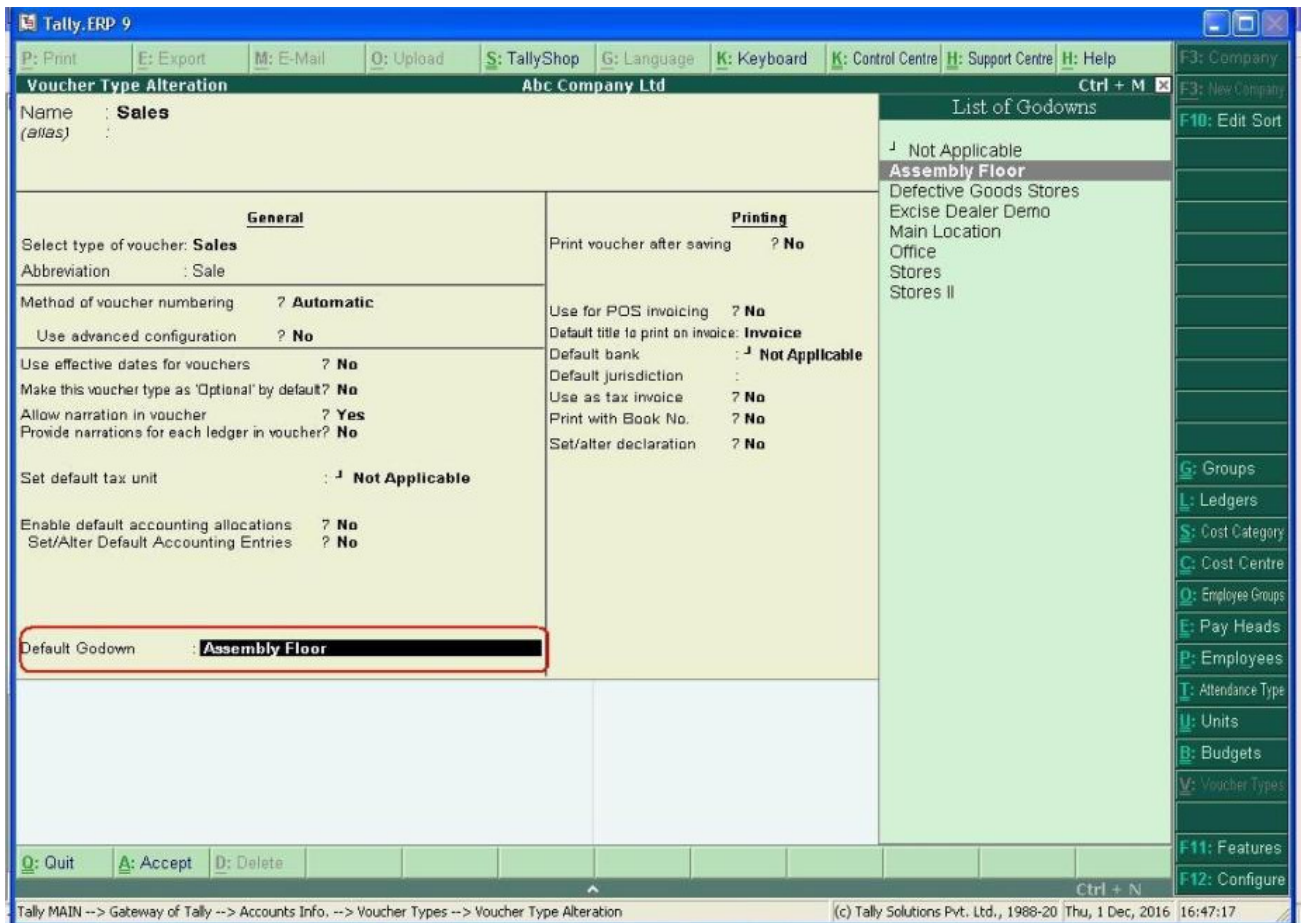
F1: Accounts **F2:** Inventory **F3:** Statutory **F4:** TSS **F5:** Audit

Accept ?
Yes or **No**

Go to **Gateway of Tally → Accounts Info. → Voucher Types → Create/Alter → Sales Order / Delivery Note / Sales / Credit Note / Purchase Order / Receipt Note / Purchase / Debit Note**

Set Default Godown as below.

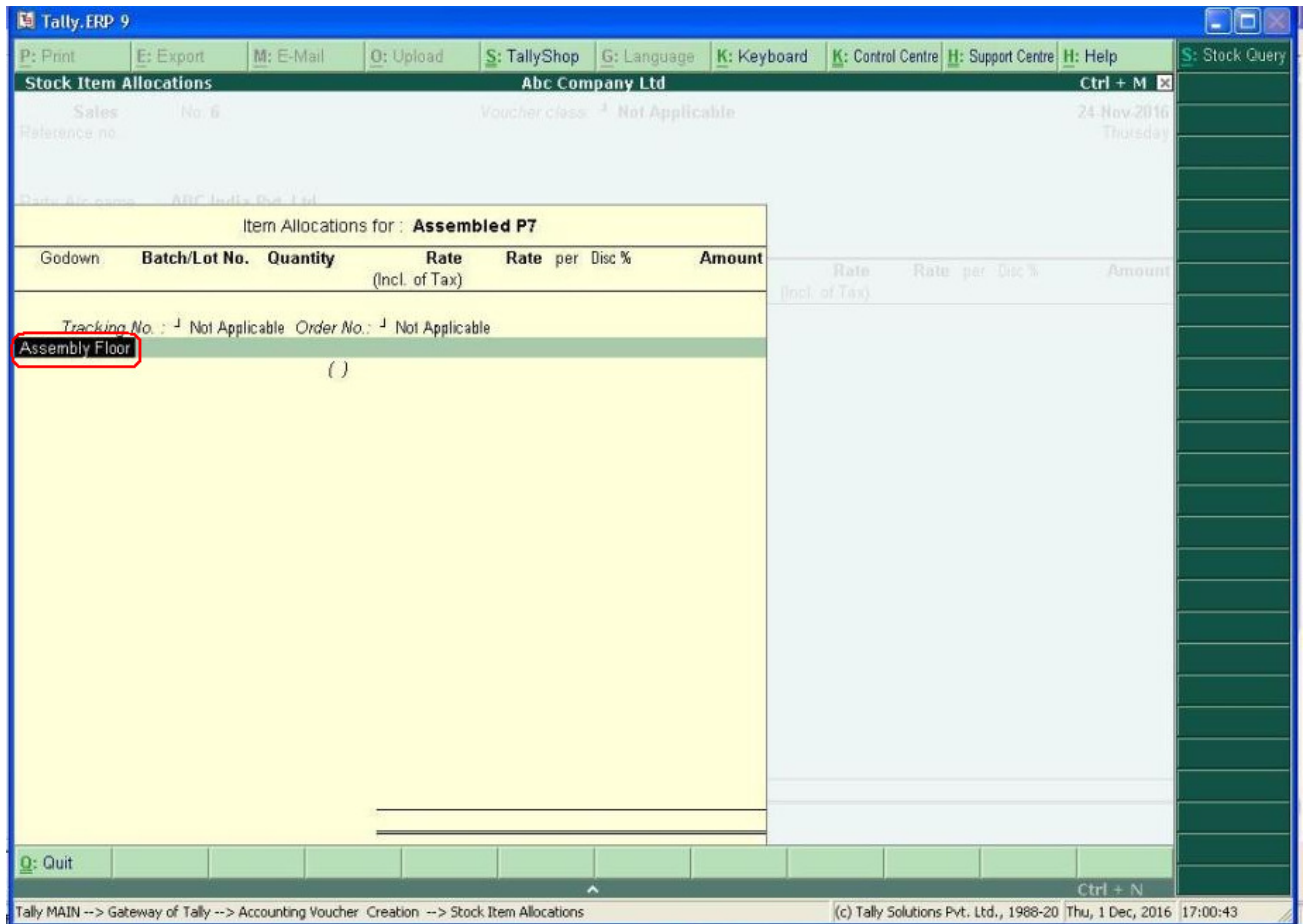
In “Default Godown” you can select the Godown from which transaction is to be maintained. If you don’t want to allocate default Godown, you can select Not Applicable.



Detailed User Guide:

1. Navigate through Gateway of Tally → Accounting Voucher → Sales.

Godown Name will be filled automatically from Default Godown of Sales Voucher Type.



Note: Same way, Godown will be filled automatically in Sales Order, Delivery Note, Credit Note, Purchase Order, Receipt Note, Purchase, Debit Note Voucher from Voucher Type Default Godown.

FAQ

Which version/releases of Tally.ERP 9 does the add-on support?

This add-on will work only with Tally ERP 9 Series A, release 3.0 onwards.

How will I get support for this add-on?

For any functional support requirements please do write to us on tddl@aaplautomation.com or call us at +91-288-2660530/31 or +91-9099908115/ 9825098442.

If I need some enhancement / changes to be incorporated for the add-on, whom should I contact?

Please to write to us on tddl@aaplautomation.com with your additional requirements and we will revert to you in 24 hours.

Will new features added be available to us?

We offer one year availability of all support and new features free of cost. After one year, nominal subscription cost will be applicable to you to continue to get free support and updates.

What will happen after one year?

There is no fixed annual charge to be payable mandatory. However if any changes are required in our Add-On to make compatible with New Release of Tally.ERP9 then the modification Charges will be applied.

I am using a multi site. Can I use the same Add-on for all the sites?

No, one Add-on will work only for 1 site. You need to purchase again if you want to use the same Add-on for more sites.

I have upgraded to a new Tally.ERP 9 Release. What will happen?

Normally, the add-on will work fine without any glitches. If you face problems with the Add-on, you can contact us for support.

Product and Features Page shows errors with the Add-on, What do I do?

Check first if the error is because of the Add-on or because of clashes between 2 TDLs (An add-on is also a TDL). In case of clashes, disable one or more TDLs and check which TDL has error. If the Add-on has a problem, you can report it to us.

My Tally went into educational mode after installing the add-on. What do I do?

Go into **Gateway of Tally** → **Press F12** → **Select Product and Features** -> **Press F4** and remove the Add-on from the list and Restart Tally.