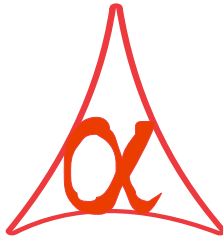




POWER OF SIMPLICITY

Set Standard Rate for
Multiple Stock Items - 1.0



Alpha Automation Pvt. Ltd.

Head Office

336-Madhva Plaza, Opp. SBI Bank,

Nr. Lal Bungalow, JAMNAGAR –Gujarat (India)

Phone No. : +91-288-2660530/31, +91-9099908115, 9825098442

Email : tdl@aaplautomation.com

Branch Office

Rajkot : 807-Dhanrajni Complex, Nr. Hotel Imperial Palace, Dr. Yagnik Road, RAJKOT (Gujarat).

Gandhidham : 92-GMA Building, 2nd Floor, Plot No. -297, Sector-12B. GANDHIDHAM (Gujarat)

© 2012 Alpha Automation Pvt. Ltd.. All rights reserved.

Tally, Tally 9, Tally9, Tally.ERP, Tally.ERP 9, Shoper, Shoper 9, Shoper POS, Shoper HO, Shoper 9 POS, Shoper 9 HO, Tally Developer, Tally. Developer 9, Tally.NET, Tally Development Environment, Tally Extender, Tally Integrator, Tally Integrated Network, Tally Service Partner, Tally Academy & Power of Simplicity are either registered trademarks or trademarks of Tally Solutions Pvt. Ltd. in India and/or other countries. All other trademarks are properties of their respective owners.

Version: Alpha Automation Pvt. Ltd. / Set Standard Rate for Multiple Stock Items / 1.0/
Dec-2016.

Set Standard Rate for

Multiple Stock Items - 1.0

Introduction:

With this add-on, you can enter (create or alter) the standard rate for Multiple Stock Items from a Single window.

Important!

As a best practice it is advisable to back up your company data

Installation

1. Copy the TCP file in Tally.ERP9 Folder.
2. Gateway of Tally → F12→ Product & Features → F4 (Manage Local TDL) → Select Yes in Load TDL on Start up and give the file name of TCP File. After pressing the Enter Key will show TDL Status which should be Active.

System requirements:

No additional hardware / software infrastructure is required for executing and operation this applications module

Setup Guide

For Tally.ERP 9 Series A Release 3.1 and below

Go to **Gateway of Tally > F11: Features > Accounting Features**

Set "Yes" to the Options "Enable Set Standard Rate for Multiple Stock Items ?"

Company: Abc Company Ltd			
Accounting Features			
General		Invoicing	
Integrate Accounts and Inventory	? Yes	Allow Invoicing	? Yes
Income/Expense Statement instead of P & L	? No	Enter Purchases in Invoice Format	? Yes
Allow Multi-Currency	? Yes	Use Debit/Credit Notes	? Yes
		Use Invoice mode for Credit Notes	? Yes
		Use Invoice mode for Debit Notes	? Yes
Outstandings Management		Budgets & Scenario Management	
Maintain Bill-wise Details	? Yes	Maintain Budgets and Controls	? Yes
(for Non-Trading A/cs also)	? Yes	Use Reversing Journals & Optional Vouchers	? Yes
Activate Interest Calculation	? Yes		
(use advanced parameters)	? Yes		
Cost/Profit Centres Management		Other Features	
Maintain Payroll	? Yes	Enable Cheque Printing	? Yes
Maintain Cost Centres	? Yes	Set/Alter Cheque Printing Configuration	? No
Use Cost Centre for Job Costing	? No	Allow Zero valued entries	? Yes
More than ONE Payroll / Cost Category	? Yes	Maintain Multiple Mailing Details for Company & Ledgers	? Yes
Use Pre-defined Cost Centre Allocations during Entry	? No	Set/Alter Company Mailing Details	? No
Show Opening Balance for Revenue Items in Reports	? No	Enable Company Logo	? No
		Enable Set Standard Rate for Multiple Stock Items	? Yes

Accept ?
Yes or No

F1: Accounts F2: Inventory F3: Statutory F4: Tally.NET F5: Audit

For Tally.ERP 9 Series A Release 3.2 and above

Go to **Gateway of Tally > F11: Features > Add-on Features**

Set "Yes" to the Options "Enable Set Standard Rate for Multiple Stock Items ?"

Company: Demo Company

Add-On Features

Enable Set Standard Rate for Multiple Stock Items ? **Yes**

Click on Shop button to buy Add-Ons

F1: Accounts **F2:** Inventory **F3:** Statutory **F4:** TSS **F5:** Audit

Accept ?
Yes or **No**

Detailed User Guide:

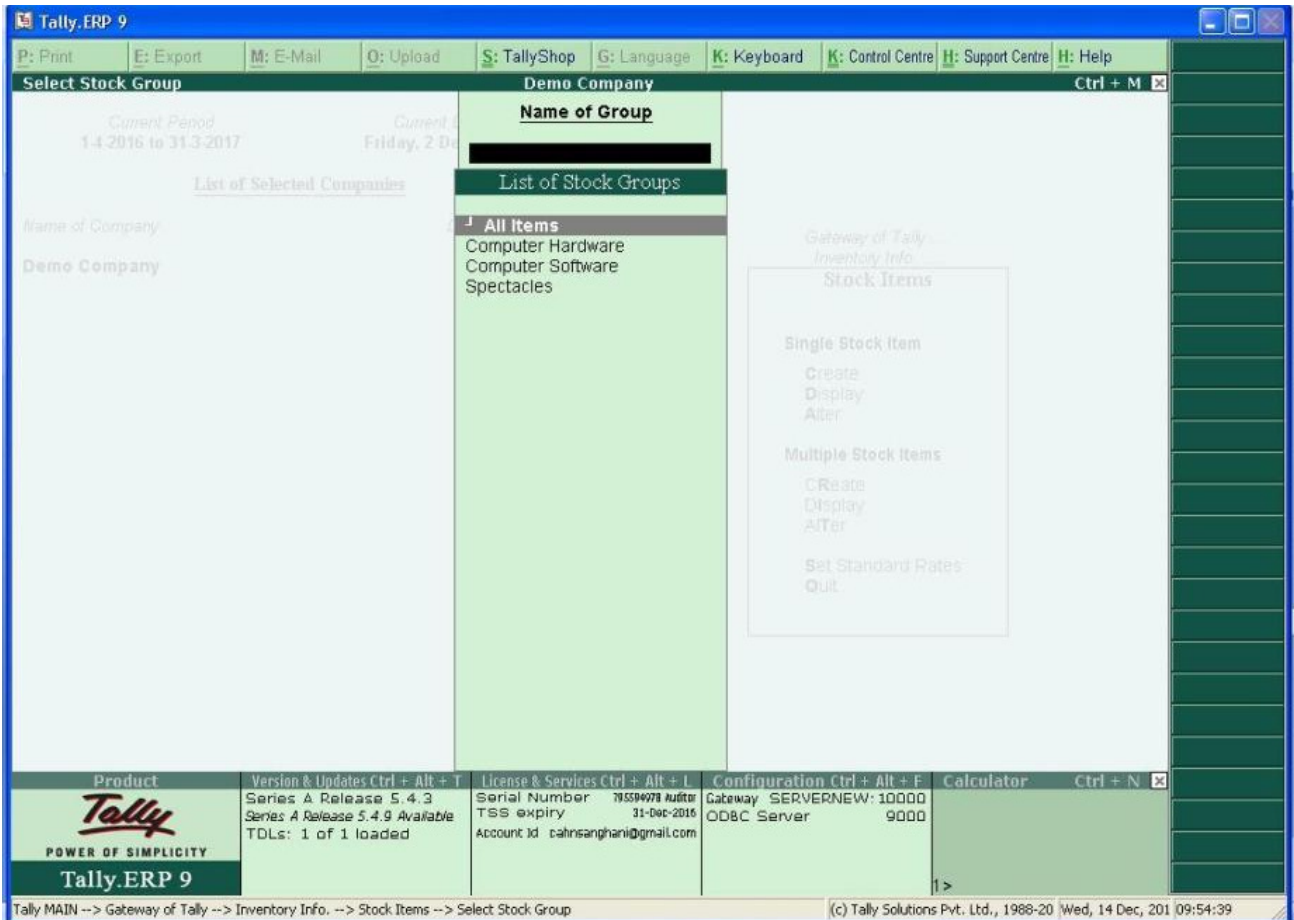
1. Navigate through Gateway of Tally → Inventory Info. → Stock Items → Set Standard Rates.

The screenshot displays the Tally ERP 9 software interface. The main window is titled 'Gateway of Tally' and shows the 'Current Period' as '1-4-2016 to 31-3-2017' and the 'Current Date' as 'Friday, 2 Dec, 2016'. Below this, there is a 'List of Selected Companies' table with one entry: 'Demo Company' with a 'Date of Last Entry' of '2-Dec-2016'. A context menu is open over the 'Inventory Info.' option, showing 'Stock Items' with sub-options: 'Single Stock Item' (Create, Display, Alter) and 'Multiple Stock Items' (Create, Display, Alter). The 'Set Standard Rates' option is highlighted with a red circle. The bottom status bar shows the navigation path: 'Tally MAIN --> Gateway of Tally --> Inventory Info. --> Stock Items'. The bottom right corner of the window displays '(c) Tally Solutions Pvt. Ltd., 1988-20 Wed, 14 Dec, 201 09:51:46'.

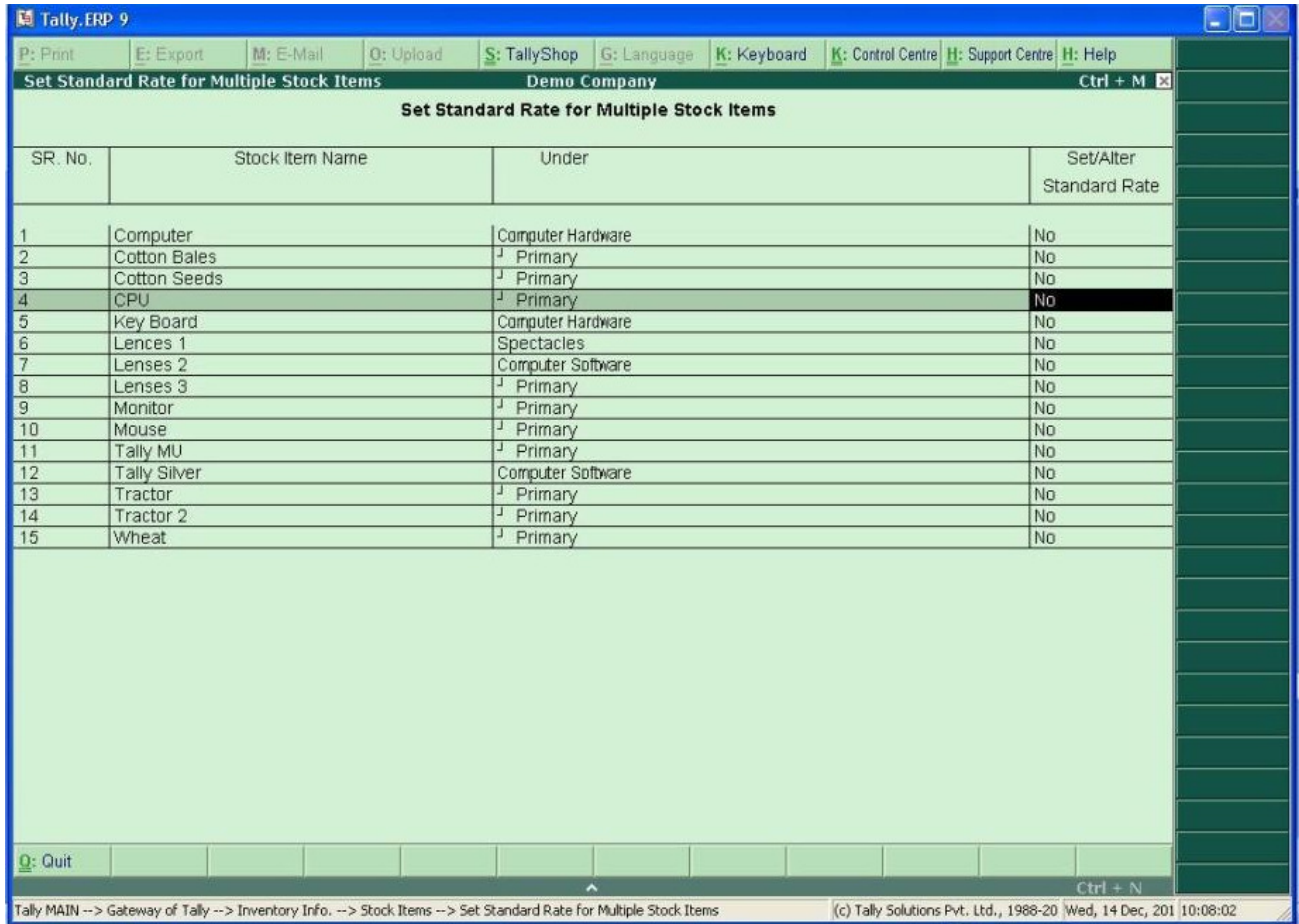
Name of Company	Date of Last Entry
Demo Company	2-Dec-2016

Product	Version & Updates Ctrl + Alt + T	License & Services Ctrl + Alt + L	Configuration Ctrl + Alt + F	Calculator Ctrl + N
Tally POWER OF SIMPLICITY Tally.ERP 9	Series A Release 5.4.3 Series A Release 5.4.9 Available TDLs: 1 of 1 loaded	Serial Number 795594978 Auditor TSS expiry 31-Dec-2016 Account Id cahnanghani@gmail.com	Gateway SERVERNEW: 10000 ODBC Server 9000	

2. Select a stock group in which you want to specify the standard rate for Items.



3. Set “Yes” to “Set/Alter Standard Rates” and a sub form appears to enter the details of standard sale/purchase rates.



4. You can specify the standard selling and purchase price and accept the screen. The Same rate will display when you create the purchase and sales voucher or invoice.

The screenshot shows the Tally.ERP 9 interface. The main window is titled "Set Standard Rate for Multiple Stock Items" for "Demo Company". A list of stock items is shown on the left, with a pop-up window for "CPU" in the center. The pop-up window is divided into two sections: "Standard Cost" and "Standard Selling Price".

Standard Cost		Standard Selling Price	
Applicable From	Rate per	Applicable From	Rate per
1-Apr-2010	20,000.00 Nos	1-Apr-2016	25,000.00 Nos

The background list of stock items includes: 1 Computer, 2 Cotton Bales, 3 Cotton Seeds, 4 CPU, 5 Key Board, 6 Lenses 1, 7 Lenses 2, 8 Lenses 3, 9 Monitor, 10 Mouse, 11 Tally MU, 12 Tally Silver, 13 Tractor, 14 Tractor 2, 15 Wheat. The "Set/Alter Standard Rate" column for all items is currently set to "No".

FAQ

Which version/releases of Tally.ERP 9 does the add-on support?

This add-on will work only with Tally ERP 9 Series A, release 3.0 onwards.

How will I get support for this add-on?

For any functional support requirements please do write to us on tddl@aaplautomation.com or call us at +91-288-2660530/31 or +91-9099908115/ 9825098442.

If I need some enhancement / changes to be incorporated for the add-on, whom should I contact?

Please to write to us on tddl@aaplautomation.com with your additional requirements and we will revert to you in 24 hours.

Will new features added be available to us?

We offer one year availability of all support and new features free of cost. After one year, nominal subscription cost will be applicable to you to continue to get free support and updates.

What will happen after one year?

There is no fixed annual charge to be payable mandatory. However if any changes are required in our Add-On to make compatible with New Release of Tally.ERP9 then the modification Charges will be applied.

I am using a multi site. Can I use the same Add-on for all the sites?

No, one Add-on will work only for 1 site. You need to purchase again if you want to use the same Add-on for more sites.

I have upgraded to a new Tally.ERP 9 Release. What will happen?

Normally, the add-on will work fine without any glitches. If you face problems with the Add-on, you can contact us for support.

Product and Features Page shows errors with the Add-on, What do I do?

Check first if the error is because of the Add-on or because of clashes between 2 TDLs (An add-on is also a TDL). In case of clashes, disable one or more TDLs and check which TDL has error. If the Add-on has a problem, you can report it to us.

My Tally went into educational mode after installing the add-on. What do I do?

Go into **Gateway of Tally** → **Press F12** → **Select Product and Features** -> **Press F4** and remove the Add-on from the list and Restart Tally.