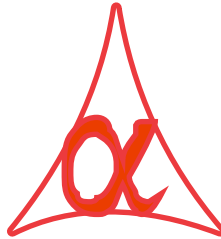




**POWER OF SIMPLICITY**

**Print Second Bank Details**  
**in Invoice -1.0**



**Alpha Automation Pvt. Ltd.**

**Head Office**

336-Madhva Plaza, Opp. SBI Bank,

Nr. Lal Bungalow, JAMNAGAR –Gujarat (India)

Phone No. : +91-288-2660530/31/32, +91-9099908115, 9825098442

Email : [tdl@aaplautomation.com](mailto:tdl@aaplautomation.com)

**Branch Office**

Rajkot : 807-Dhanrajni Complex, Nr. Hotel Imperial Palace, Dr. Yagnik Road, RAJKOT (Gujarat).

Gandhidham : 92-GMA Building, 2nd Floor, Plot No. -297, Sector-12B. GANDHIDHAM (Gujarat)

© 2012 Alpha Automation Pvt. Ltd.. All rights reserved.

Tally, Tally 9, Tally9, Tally.ERP, Tally.ERP 9, Shoper, Shoper 9, Shoper POS, Shoper HO, Shoper 9 POS, Shoper 9 HO, Tally Developer, Tally. Developer 9, Tally.NET, Tally Development Environment, Tally Extender, Tally Integrator, Tally Integrated Network, Tally Service Partner, Tally Academy & Power of Simplicity are either registered trademarks or trademarks of Tally Solutions Pvt. Ltd. in India and/or other countries. All other trademarks are properties of their respective owners.

Version: Alpha Automation Pvt. Ltd. /Print Second Bank Detail in Invoice /1.0/Dec-2017.

# Print Second Bank Detail

## In Invoice-1.0

Introduction:

This add-on facilitates User to Print Second Bank Detail in invoice.

This add-on works in sales Voucher.

**Important!**

As a best practice it is advisable to back up your company data

### **Installation**

1. Copy the TCP file in Tally.ERP9 Folder.
2. Gateway of Tally → F12→ Product & Features → F4 (Manage Local TDL) → Select Yes in Load TDL on Start up and give the file name of TCP File. After pressing the Enter Key will show TDL Status which should be Active.

### **System requirements:**

No additional hardware / software infrastructure is required for executing and operation this applications module

## Setup Guide

For Tally.ERP 9 Series A Release 6.0 and above

Go to **Gateway of Tally > F11: Features > Add-on Features**

Set "Yes" to the options "Print Second Bank Detail in Invoice?"

Company: Demo Company

Add-On Features

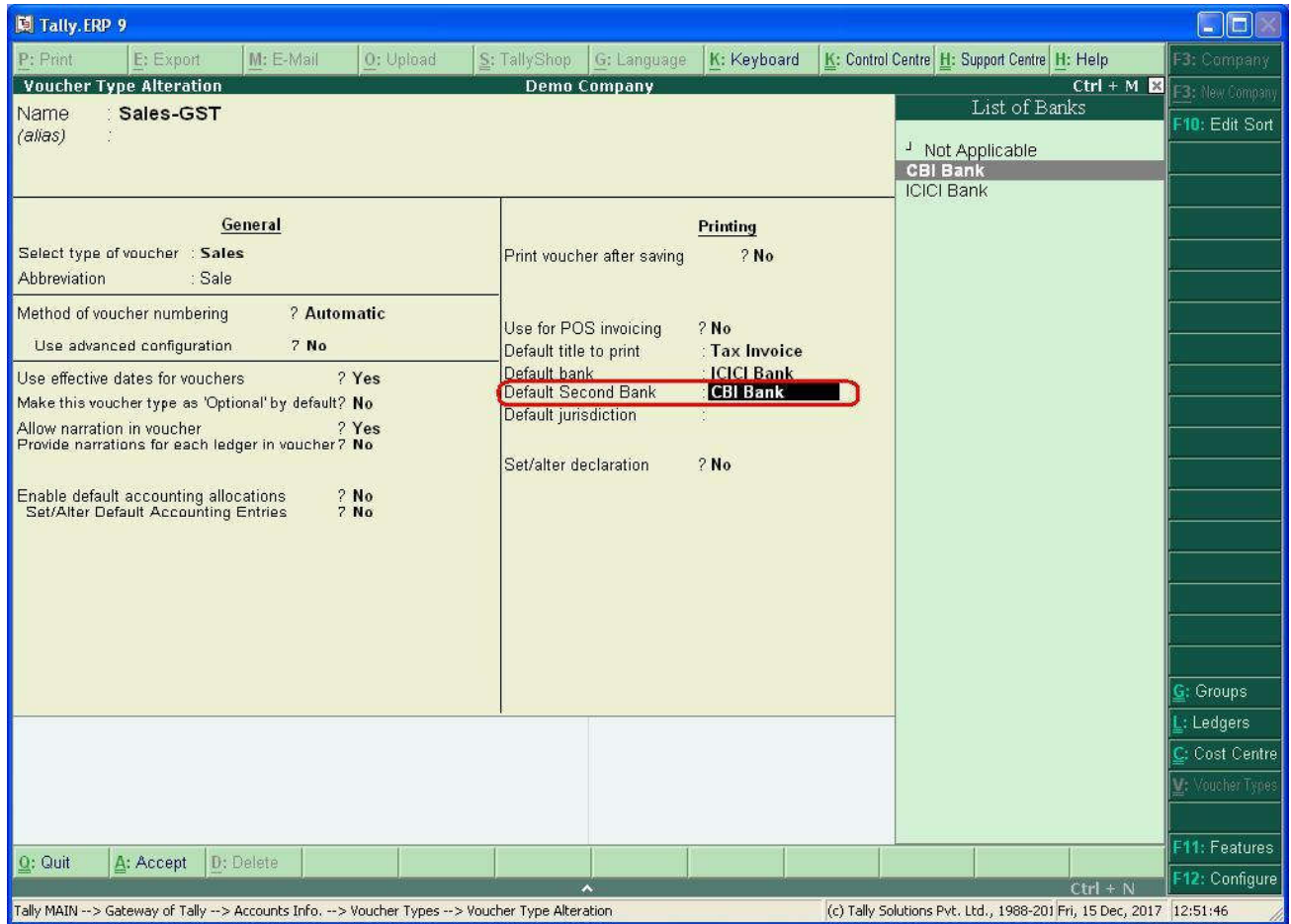
Print Second Bank Detail In Invoice      ? **Yes**

*Click on Shop button to buy Add*

**F1: Accounts   F2: Inventory   F3: Statutory**

**Accept ?**  
**Yes or No**

Go to **Gateway of Tally** → **Accounts Info.** → **Voucher Types** → **Alter** → **Sales**  
 Set “Default Second Bank:”



**Detailed User Guide:**

1. Navigate through Gateway of Tally → Accounting Voucher → Sales  
Create Sales Voucher & Print Preview the same.

**Tally.ERP 9**

P: Print   E: Export   M: E-Mail   O: Upload   S: TallyShop   G: Language   K: Keyboard   K: Control Centre   H: Support Centre   H: Help

14																							
15																							
16																							
17																							
18																							
19																							
20																							
21																							
22	Total																						
23	10.000 Kgs																						
24	₹ 3,000.03																						
25	Amount Chargeable (in words) <span style="float: right;">E. &amp; O.E</span>																						
26	<b>INR Three Thous and and Three paise Only</b>																						
27	HSN/SAC										Taxable Value		Integrated Tax Rate		Total Tax Amount								
28	123456789										2,678.60		12%		321.43		321.43						
29											<b>Total</b>		<b>2,678.60</b>		<b>321.43</b>		<b>321.43</b>						
30	Tax Amount (in words) : <b>INR Three Hundred Twenty One and Forty Three paise Only</b>																						
31	Company's Bank Details																						
32	Bank Name : ICICI Bank																						
33	A/c No. : 859674123																						
34	Branch & IES Code : Branch Name-ICICI & IESC-ICICI																						
35	Company's PAN : PAN COMPAN																						
36	Declaration																						
37	We declare that this invoice shows the actual price of the goods described and that all particulars are true and correct.																						
38	1.																						
39	2.																						
40	3.																						
41											Bank Name : CBI Bank		A/c No. : 35337548		Branch & IFS Code : Branch Name-CBI & IFSCODE-CBI								
42															for Demo Company								
43															Authorized Signatory								
44	This is a Computer Generated Invoice																						

Tally MAIN --> Gateway of Tally --> Display Menu --> Account Books --> Sales Register --> Voucher Register --> Accounting V... (c) Tally Solutions Pvt. Ltd., 1988-201 Fri, 15 Dec, 2017 13:02:30

# FAQ

## **Which version/releases of Tally.ERP 9 does the add-on support?**

This add-on will work only with Tally ERP 9 Series A, release 6.0 onwards.

## **How will I get support for this add-on?**

For any functional support requirements please do write to us on [tdl@aaplautomation.com](mailto:tdl@aaplautomation.com) or call us at +91-288-2660530/31/32 or +91-9099908115/ 9825098442.

## **If I need some enhancement / changes to be incorporated for the add-on, whom should I contact?**

Please to write to us on [tdl@aaplautomation.com](mailto:tdl@aaplautomation.com) with your additional requirements and we will revert to you in 24 hours.

## **Will new features added be available to us?**

We offer one year availability of all support and new features free of cost. After one year, nominal subscription cost will be applicable to you to continue to get free support and updates.

## **What will happen after one year?**

There is no fixed annual charge to be payable mandatory. However if any changes are required in our Add-On to make compatible with New Release of Tally.ERP9 then the modification Charges will be applied.

## **I am using a multi site. Can I use the same Add-on for all the sites?**

No, one Add-on will work only for 1 site. You need to purchase again if you want to use the same Add-on for more sites.

## **I have upgraded to a new Tally.ERP 9 Release. What will happen?**

Normally, the add-on will work fine without any glitches. If you face problems with the Add-on, you can contact us for support.

**Product and Features Page shows errors with the Add-on, What do I do?**

Check first if the error is because of the Add-on or because of clashes between 2 TDLs (An add-on is also a TDL). In case of clashes, disable one or more TDLs and check which TDL has error. If the Add-on has a problem, you can report it to us.

**My Tally went into educational mode after installing the add-on. What do I do?**

Go into **Gateway of Tally** → **Press F12** → **Select Product and Features** → **Press F4** and remove the Add-on from the list and Restart Tally.