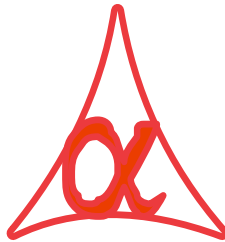




POWER OF SIMPLICITY

Envelop Printing – 1.2



Alpha Automation Pvt. Ltd.

Head Office

104-The Grand Apurva, Nr. Hotel Fortune Palace,

Nr. Digjam Circle, Airport Road - JAMNAGAR –Gujarat (India)

Phone No. : +91-288-2713956/57/58, 9023726215/16, 9099908115, 9825036442

Email : mail@aaplautomation.com

Branch Office

Rajkot : 807-Dhanrajni Complex, Nr. Hotel Imperial Palace, Dr. Yagnik Road, RAJKOT (Gujarat).

Gandhidham : 92-GMA Building, 2nd Floor, Plot No. -297, Sector-12B. GANDHIDHAM (Gujarat)

© 2012 Alpha Automation Pvt. Ltd.. All rights reserved.

Tally, Tally 9, Tally9, Tally.ERP, Tally.ERP 9, Shoper, Shoper 9, Shoper POS, Shoper HO, Shoper 9 POS, Shoper 9 HO, Tally Developer, Tally. Developer 9, Tally.NET, Tally Development Environment, Tally Extender, Tally Integrator, Tally Integrated Network, Tally Service Partner, Tally Academy & Power of Simplicity are either registered trademarks or trademarks of Tally Solutions Pvt. Ltd. in India and/or other countries. All other trademarks are properties of their respective owners.

Version: Alpha Automation Pvt. Ltd. /Envelop Printing/1.2/ Feb – 2020

Envelop Printing – 1.2

Introduction:

- This add-on facilitates the user to Print Envelop Either from Envelop printing menu or after Sales Voucher Printing.
- This module gives option of configuring Envelop Height, Width, Space Top, and Space Left for cover printing. User can also configure whether he wants to print self address or not.

Important!

As a best practice it is advisable to back up your company data

Installation

1. Copy the TCP file in Tally.ERP9 Folder.
2. Gateway of Tally → F12 → Product & Features → F4 (Manage Local TDL) → Select Yes in Load TDL on Start up and give the file name of TCP File. After pressing the Enter Key will show TDL Status which should be Active.

System requirements:

No additional hardware / software infrastructure is required for executing and operation this applications module

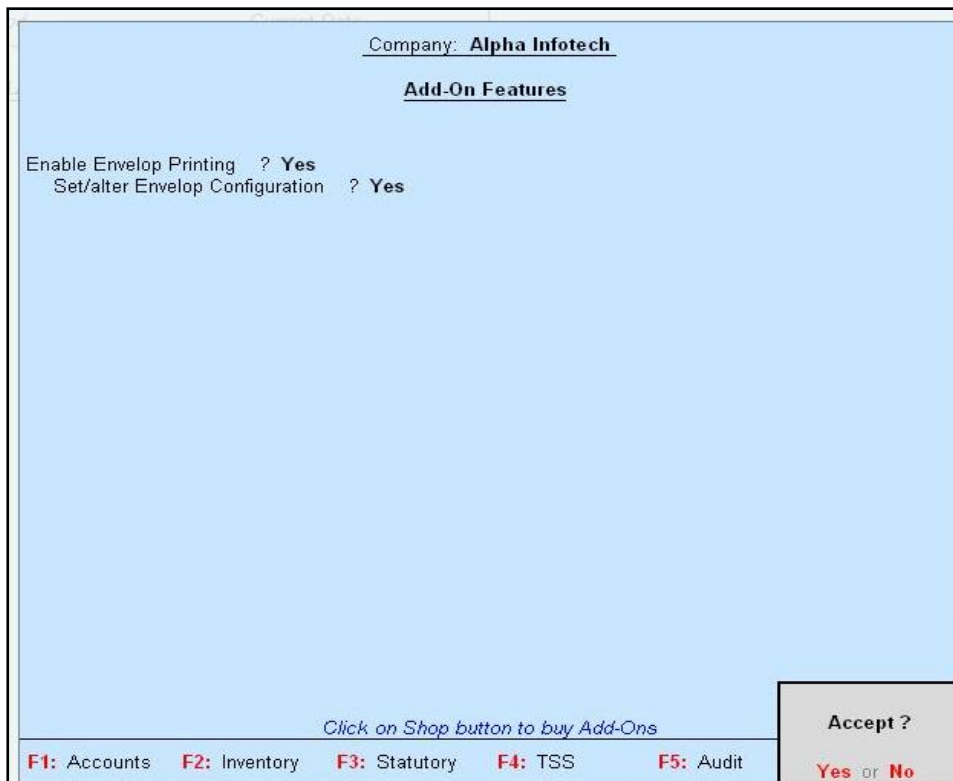
Setup Guide:

For Tally.ERP 9 Series A Release 3.2 and above

Go to **Gateway of Tally > F11: Features > Add-on Features**

Set **“Yes”** to the option **“Enable Envelop Printing?”**

1. Set **“Yes”** to the option **“Set/alter Envelop configuration?”**



- User can set the required configuration as per his requirement. As per this configuration Kind Attention and Self Address will be printed in Envelop Printing and Sales Invoice.



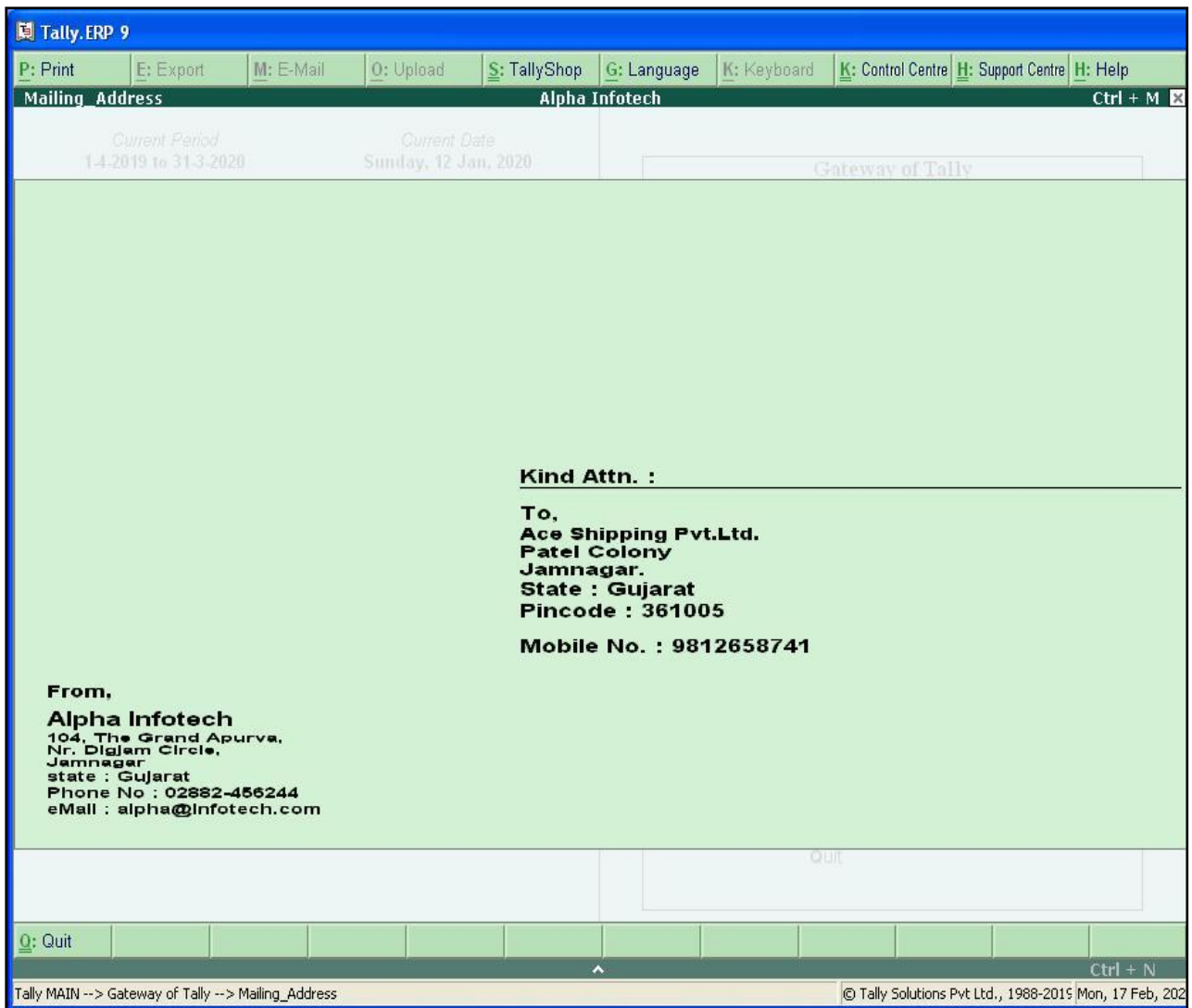
Detailed User Guide:

A. Envelop Printing with Select a particular Ledger.

1. Go to **Gateway of tally** → **Envelop Printing** → **Select Ledger**.



2. This will display Envelop Printing as Shown below:



B. Envelop Printing After a sales invoice:

After printing sales voucher Press Esc. It will ask user to print envelop printing or not.

The screenshot shows the Tally.ERP 9 interface. At the top, there is a menu bar with options: P: Print, E: Export, M: E-Mail, O: Upload, S: TallyShop, G: Language, K: Keyboard, K: Control Centre, H: Support Centre, H: Help. Below the menu bar, the window title is "Print Report" and the company name is "Alpha Infotech". The date is "12-Jan-2020" and the day is "Sunday".

The main area displays a sales invoice for "Sales No. 34". The party name is "Ace Shipping Pvt.Ltd." and the sales ledger is "Sales". The invoice table shows one item: "Chair" with a quantity of 20, a rate of 15,000.00, and a total amount of 3,00,000.00.

A dialog box titled "Printing" is overlaid on the invoice. It contains the following information:

- Printer:** Auto Canon LBP2900 on AAPL-D (AAPL-D\Canon LBP2900)
- Number of copies:** 1
- Print language:** English
- Print format:** Neat Mode
- Range of pages to print:** All
- Paper type:** A4
- Paper size:** (8.27" x 11.69") or (210 mm x 297 mm)
- Print area:** (7.67" x 11.30") or (200 mm x 287 mm)

Below the printing information, there is a section titled "Report Titles" with the option "Envelop Printing" selected. A sub-dialog box titled "Print?" is open, asking "Print?" with "Yes or No" options.

At the bottom of the screen, there is a status bar with the text: "Tally MAIN --> Gateway of Tally --> Display Menu --> Account Books --> Sales Register --> Voucher Register --> Accounting V..." and the date "Tue, 18 Feb, 2020".

FAQ

Which version/releases of Tally.ERP 9 does the add-on support?

This add-on will work only with Tally ERP 9 Series A, release 5.1 onwards.

How will I get support for this add-on?

For any functional support requirements please do write to us on mail@aaplautomation.com or call us at +91-288-2713956/57/58, +91-9023726215/16, 9099908115, 9825036442.

If I need some enhancement / changes to be incorporated for the add-on, whom should I contact?

Please to write to us on mail@aaplautomation.com with your additional requirements and we will revert to you in 24 hours.

Will new features added be available to us?

We offer one year availability of all support and new features free of cost. After one year, nominal subscription cost will be applicable to you to continue to get free support and updates.

What will happen after one year?

There is no fixed annual charge to be payable mandatory. However if any changes are required in our Add-On to make compatible with New Release of Tally.ERP9 then the modification Charges will be applied.

I am using a multi site. Can I use the same Add-on for all the sites?

No, one Add-on will work only for 1 site. You need to purchase again if you want to use the same Add-on for more sites.

I have upgraded to a new Tally.ERP 9 Release. What will happen?

Normally, the add-on will work fine without any glitches. If you face problems with the Add-on, you can contact us for support.

Product and Features Page shows errors with the Add-on, What do I do?

Check first if the error is because of the Add-on or because of clashes between 2 TDLs (An add-on is also a TDL). In case of clashes, disable one or more TDLs and check which TDL has error. If the Add-on has a problem, you can report it to us.

My Tally went into educational mode after installing the add-on. What do I do?

Go into **Gateway of Tally** → **Press F12** → **Select Product and Features** -> **Press F4** and remove the Add-on from the list and Restart Tally.